

## **Booklet Introduction**

Adam and Eve were the first people God created. They came together in marriage to form a family. Their first two sons were Cain and Abel.

What happened to Cain and Abel? Cain killed Abel because he was jealous of him. Then Cain and his family followed after evil.

After Abel died Adam and Eve had another son whom they named Seth. Seth and some of his family called on the name of God. Cain's line died out in the flood. Noah came from the line of Seth. Jesus came from Noah's lineage.

## **Discussion Questions**

Day 1: What was Adam like when God created him? What did God want men to do? What was Adam's sin? What was the result of Adam's sin?

Day 2: Because of Adam's sin what do most people do now? What did Cain do? What does abound mean? Why did sin abound?

Day 3: What was the earth like in the beginning? How did living in a wonderful place affect people? What happened to the earth after the Fall?

Day 4: What does it mean to be inclined? What are people's hearts inclined to? Why? What has God done to provide for people?

Day 5: What makes life go wrong? How do we overcome our own evil? (Note: Evil is anything that falls short of the good God desires.)

Day 6: What would cause a person to trust in Jesus? What does trusting in Jesus do for us? What does it mean to be just?

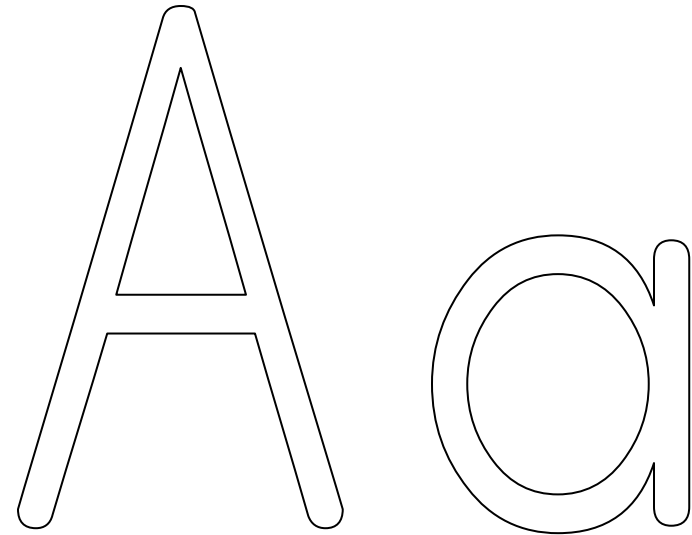
## **Lesson Rhyme**

A—A	Make sign of "A"
Adam	Put up R index finger for "first"
In him	Tap R hand with L
life did begin	Wiggle fingers of both hands up in front of body
A—A—Adam	Same as above
People followed	Move R hand in front of body like following a path
in his sin.	Make thumbs down sign



# #27

## **What was Adam's lineage?**



A—A—Adam

In him life did begin

A—A—Adam

People followed in his sin.

## Day 1

Draw a picture of Adam in the garden.

When God created Adam  
he made him very good.  
God wanted men to walk with him  
and live the way they should.  
Adam's sin changed everything.  
It is called the Fall.  
That means most men won't follow God  
or listen to his call.

## Day 6

Draw a picture of you doing good.

We can be made better  
when in Jesus we do trust.  
Letting Jesus change us  
so we want what's right and just.  
All the evil that we do  
through Adam did begin.  
But through the gift of Jesus  
we can overcome our sin.

Genesis 5:1: <sup>1</sup> This is the written account of Adam's line.  
When God created man, he made him in the likeness of  
God.

Romans 5:19: <sup>19</sup> For just as through the disobedience of the  
one man the many were made sinners, so also through the  
obedience of the one man the many will be made righteous.

## Day 5

Draw a picture of you going to church.

The evil hidden in our hearts  
is what makes life go wrong.  
But we can overcome it  
when to Jesus we belong.  
To make the earth a better place  
and bring God's heart delight.  
We must choose to follow God  
and walk in Jesus light.

## Day 2

Draw a picture of Adam and Eve's family.

Adam and Eve had lots of kids,  
the earth was filled with men.  
Most of them rejected God  
and followed after sin.  
Remember Cain killed Abel.  
His blood flowed on the ground.  
Then Cain's children followed evil,  
so sin it did abound.

Romans 5:18:<sup>18</sup> Consequently, just as the result of one trespass was condemnation for all men, so also the result of one act of righteousness was justification that brings life for all men.

Genesis 4:23-24:<sup>23</sup> Lamech said to his wives, "Adah and Zillah, listen to me; wives of Lamech, hear my words. I have killed a man for wounding me, a young man for injuring me.  
<sup>24</sup> If Cain is avenged seven times, then Lamech seventy-seven times."

## Day 3

Draw a picture of a place that isn't pretty.

God created the earth perfect,  
terrific to behold.  
In the beginning men did thrive  
and lived to be quite old.  
But ever since the Fall,  
earth started breaking down.  
And when God sees what's happened,  
his face it has a frown.

## Day 4

Draw a picture of Jesus

Things no longer function  
in the way that God designed.  
To follow after evil  
men's hearts are now inclined.  
Though men tend to follow evil,  
God still provides for them,  
Sending Jesus to the earth  
to pay the price for sin.

Romans 5:14: <sup>14</sup> Nevertheless, death reigned from the time of Adam to the time of Moses, even over those who did not sin by breaking a command, as did Adam, who was a pattern of the one to come.

Romans 5:15: <sup>15</sup> But the gift is not like the trespass. For if the many died by the trespass of the one man, how much more did God's grace and the gift that came by the grace of the one man, Jesus Christ, overflow to the many!