

## Lesson Introduction

When Adam and Eve ate the fruit God had told them not to eat, sin entered the world. God had to punish Adam and Eve for the bad thing they had done. He told the man that he would have to work hard to get food to eat. He told the woman that she would have a lot of pain when she gave birth to a baby. Their marriage would no longer be perfect like it was when God made them one.

God also sent them out of the Garden so they couldn't eat from the Tree of Life and live forever. If they could live forever, their sin would get worse and worse. When Adam and Eve sinned death entered the world and God's good creation didn't work the way God had designed it to.

Because Adam and Eve sinned we are all born with a sin nature. That means we easily choose to do what God doesn't want us to do. We have to learn to want to do what is right and good.

## Discussion Questions

Day 1: Who is Satan? What happens when we follow Satan? How did Eve follow Satan? How did Adam follow Satan?

Day 2: What happened when Adam and Eve ate the fruit and sinned? What does Satan have the power to do? What does that mean?

Day 3: What entered God's creation when Adam sinned? What kind of nature is everyone born with? How do we get a new, good nature?

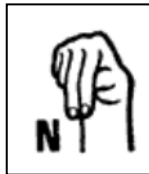
Day 4: How did Jesus defeat sin and death? What can we have because of what Jesus did? What does that do for us?

Day 5: How do we put on a new nature? What is the result?

Day 6: What will happen to us when we want to follow God and do what is right?

## Lesson Rhyme

N—N	Make sign of "N"
Nature	Pat heart with "N" sign
Old inclined to bad	Make fist on chin & pull down like beard Thumbs down sign
N—N—Nature	Same as above
A new one can be had	Hands palm up, R slides over L & then up Hands palm up in front, Close hands, & pull toward body



In the Beginning—25

# What is our nature?



N—N—Nature

Old inclined to bad

N—N—Nature

A new one can be had

## Day 1

Satan is God's enemy;  
he hates all God says is good.  
If we follow after him,  
we don't do the things we should.  
Satan tempted Eve  
and she chose to eat the fruit.  
Then Eve shared it with Adam  
and he chose to follow suit.

*Draw Adam and Eve eating the fruit.*

## Day 6

We have to follow after God  
to live in Jesus' light.  
He will cleanse us from our sin  
so we can choose what's right.  
The old nature will be put to death,  
the new will live and grow.  
And as we choose to do what's right  
our love for God will show.

*Draw a picture of you worshipping God.*

Genesis 3:12-13: <sup>12</sup> The man said, "The woman you put here with me—she gave me some fruit from the tree, and I ate it." <sup>13</sup> Then the LORD God said to the woman, "What is this you have done?" The woman said, "The serpent deceived me, and I ate."

Romans 13:14: <sup>14</sup> Rather, clothe yourselves with the Lord Jesus Christ, and do not think about how to gratify the desires of the sinful nature.

## Day 5

To put on a new nature,  
we must take off what is old.  
We can overcome our sin  
when of Jesus we take hold.  
We turn away from Satan  
and go the way we should.  
We put to death bad thoughts  
and deeds that are not good.

*Draw a picture of you putting on new clothes.*

Colossians 3:9-10: <sup>9</sup> Do not lie to each other, since you have taken off your old self with its practices <sup>10</sup> and have put on the new self, which is being renewed in knowledge in the image of its Creator.

## Day 2

At the moment that they sinned,  
everything broke down.  
God looked on them with sadness  
and his face it had a frown.  
The good world God created  
was now inclined to wrong.  
Power to deceive mankind  
to Satan did belong.

*Draw a picture of Adam and Eve looking sad.*

Genesis 3:17: <sup>17</sup> To Adam he said, "Because you listened to your wife and ate from the tree about which I commanded you, 'You must not eat of it,' "Cursed is the ground because of you; through painful toil you will eat of it all the days of your life.

## Day 3

Death entered God's creation  
when Adam chose to sin.  
Every person now is born,  
sinful from within.  
The old nature that we're born with,  
inclines us to what is bad.  
But Jesus made a way  
for a new nature to be had.

*Draw a picture of a child being bad.*

## Day 4

Jesus led a perfect life  
and died upon the cross.  
He defeated sin and death  
so Satan's not our boss.  
If we trust in Jesus,  
a new nature he does give.  
Under the power of our sin,  
we no longer have to live.

*Draw a picture of Jesus on the cross.*

Romans 5:12: <sup>12</sup> Therefore, just as sin entered the world through one man, and death through sin, and in this way death came to all men, because all sinned—

Romans 5:17: <sup>17</sup> For if, by the trespass of the one man, death reigned through that one man, how much more will those who receive God's abundant provision of grace and of the gift of righteousness reign in life through the one man, Jesus Christ.