

Lesson Introduction

Adam and Eve lived in the beautiful garden God had planted for them. Everything was peaceful in the Garden. God had only told them one thing they shouldn't do. Do you know what that one thing was?

God had told Adam and Eve not to eat the fruit from the tree of knowledge of good and evil. God said that they would die if they ate that fruit. Satan came in the form of a serpent and tempted Eve. Eve ate the fruit and gave some to Adam to eat. They disobeyed God and brought sin and death into the world. That is called the Fall.

Discussion Questions

Day 1: What kind of life did God want Adam and Eve to live? What was the one rule God gave Adam and Eve?

Day 2: Who is Satan? What did he want Eve to do? How did he get her to do that?

Day 3: What happened when Adam also ate the fruit? What kind of nature do all people have now? Why?

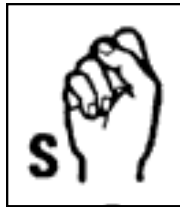
Day 4: What does the devil still do? How does Satan get us to sin?

Day 5: What is the difference between the two paths we have to choose from? What is disharmony? What is strife?

Day 6: How do we keep from going down Satan's path?

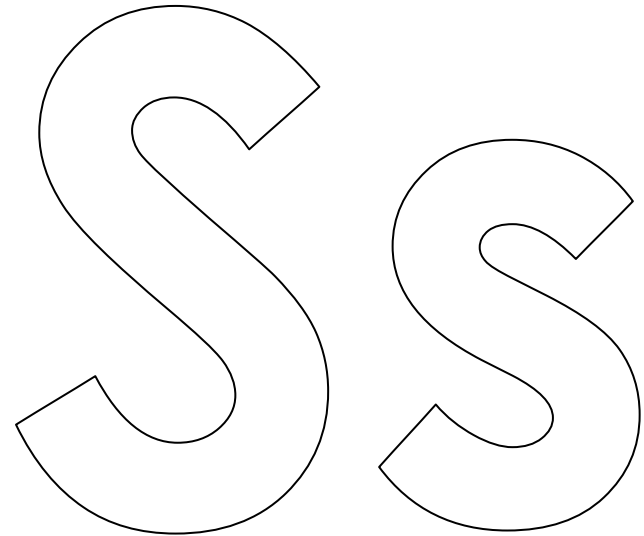
Lesson Rhyme

S—S	Make sign of "S"
Sin	Point index fingers together and then make circles, R clockwise, L counterclockwise.
Is doing what is bad	Thumbs down sign
S—S—Sin	Same as above
Makes God really sad	Arms up, look up Fists in front of eyes like rubbing tears



In the Beginning—24

What is sin?



S—S—Sin
Is doing what is bad
S—S—Sin
Makes God really sad

Day 1

In the garden Adam lived
along with Eve his wife.
God created them to live
a happy, perfect life.
The one rule that God gave them
was the fruit they shouldn't eat,
But as they gazed upon that tree
it seemed like quite a treat.

Draw a picture of Adam and Eve and the tree.

Day 6

God wants us to walk upon
his path of truth and light,
While Satan wants us to sin
and do what isn't right.
Remember to be mindful
of which path you're walking on,
And turn away from Satan
when you're tempted to do wrong.

Draw a picture of you thinking about the paths.

Genesis 3:1-3: ¹ Now the serpent was more crafty than any of the wild animals the LORD God had made. He said to the woman, "Did God really say, 'You must not eat from any tree in the garden?'" ² The woman said to the serpent, "We may eat fruit from the trees in the garden, ³ but God did say, 'You must not eat fruit from the tree that is in the middle of the garden, and you must not touch it, or you will die.'"

Romans 8:5:

⁵ Those who live according to the sinful nature have their minds set on what that nature desires; but those who live in accordance with the Spirit have their minds set on what the Spirit desires.

Day 5

There are two paths, and we will choose
which one we want to follow.

One will lead to what is good;
the other leads to sorrow.

God's path leads us to treasure,
joy and eternal life.

While Satan's leads to death,
disharmony and strife.

Draw a picture of the two paths.

Romans 6:23:²³ For the wages of sin is death, but the gift of God is eternal life in Christ Jesus our Lord.

Day 2

Satan is God's enemy
and he hates what God does say.

He roamed about the garden,
tempting Eve to disobey.

He told her that the fruit was good,
and she should take a bite.

And Eve believed what Satan said,
although it wasn't right.

Draw a picture of the Serpent talking to Eve.

Genesis 3;4-5:⁴ "You will not surely die," the serpent said to the woman. ⁵ "For God knows that when you eat of it your eyes will be opened, and you will be like God, knowing good and evil."

Day 3

Then Adam also ate the fruit
and followed Eve in sin.
Their perfect life was over,
once evil entered in.
From the garden they were sent
and no longer lived in joy,
They then passed on their nature
to every girl and boy.

Draw a picture of Adam and Eve leaving the Garden.

Day 4

The devil he still roams around,
telling lies to everyone.
He says that disobeying God
will make our lives more fun.
When we follow Satan,
we choose to do what's bad.
We will enter into sin
and make God really sad.

Draw a picture of Satan as a serpent.

Genesis 3:6: ⁶ When the woman saw that the fruit of the tree was good for food and pleasing to the eye, and also desirable for gaining wisdom, she took some and ate it. She also gave some to her husband, who was with her, and he ate it.

1 Peter 5:8: ⁸ Be self-controlled and alert. Your enemy the devil prowls around like a roaring lion looking for someone to devour.